

Tongue Separator Series 1510

Union Nut Connection

Application	Mounting to Bourdon tube pressure gauges or to pressure transmitters, for connection to measuring points with external thread. Designed for pressure measurements for which the diaphragm separators of Series 1060 can not be employed. The flow of the medium can damage the tongue separator. This must be taken into consideration when determining the measuring point.
Execution	The separator is inseparably fixed with the pressure measuring instrument to a hydraulic measuring unit, either directly, via a cooling element or via a capillary tube of stainless steel.
Type of construction	Tongue separator, diaphragm with longitudinal starshaped profile, all parts made of stainless steel, welded.
Connection	Union Nut
Temperature of medium	Up to 80 °C, other temperature limits on request
Hydraulic transmission fluid	Glycerin for direct mounting Almond oil (sweet) for capillary tube, others on request

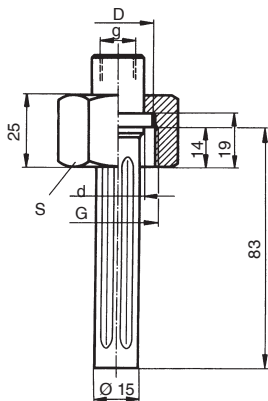


Selection chart

Type	Material of separator body		Material of diaphragm tube				Material of bottom piece		Union nut		Ordering code
Tongue separator	Stainless steel 1.4571		Stainless steel 1.4571				Stainless steel 1.4571		G 1 Stainless steel 1.4571	1511	
									G 3/4 Stainless steel 1.4571	1513	
Capillary tube 1.4571	Length m	0,5	1	1,5	2	2,5	3	3,5	4,0		
	Ordering code	1205	1210	1215	1220	1225	1230	1235	1240		
Additional metallic protection hose for capillary tube										1299	
Temperature of medium (e. g. 100 °C)										9007/0100	
Ordering example: DRO 100/811.133/075 / 1512 / 1210 / 1299 / 9007/0100											
↑ ↑ ↑ ↑ ↑ Temperature of medium 100 °C metallic protection hose Capillary tube 1 m Separator ordering code Pressure gauge (see data-sheet D1.131)											

Dimensions

Dimension drawing



Dimension chart

G	g	ø D	ø d	S	Sealing ring
G 1	G 1/2	30	24	41	A25 x 30 DIN 7603
G 3/4	G 1/4	25	18	36	A18 x 24 DIN 7603

Pressure ranges (directive values)

Mounting to pressure gauge or pressure Transmitter	NS 63	NS 80	NS 100	NS 160	Transmitter	
Pressure ranges [bar] with union nut connection	G 1	2,5...400 ²⁾	2,5...400	6...1000	10...1000	4...1000
	G 3/4	2,5...100	2,5...400	6...1000	–	

²⁾ Only possible with transition piece G 1/4 female and G 1/2 male